

More ListView Control Tips

R.J. David Burke

In the March 1998 “Tip Blowout” issue I presented several techniques for enhancing ListView controls (the cListView custom control class provided by the Visual Toolchest library). Now (thanks to Arne Bivrin for alerting me to these new styles), here are a few more tips.

Along with Internet Explorer 3.0 (back in 1996), Microsoft enhanced the common controls library. Check the date stamp for the Comctl32.dll file on your system. If it was built in 1996, these new styles should work for you:

SOLWindows
Centura

The fun never ends!

- *Grid Lines*—Add grid lines to your list view control when it’s in Details view. Makes the list view control start to look a lot like a table window . . .
- *Track Selection*—Have list view items selected just by moving the mouse over the top of the item.
- *Header Drag Drop*—Use the mouse to drag-move columns (just like you can with a table window) by dragging and dropping column headers.

- *Full Row Select*—In Details view, have the full row selected instead of just the first column.

- *One Click Activate*—Changes the list view to work like a Web browser. List view items are underlined (like a hypertext link), and the mouse pointer changes to a hand cursor.
- *Two Click Activate*—Like One Click Activate, but the Web mode doesn’t kick in until you’ve clicked on a list view item.

See the screenshot in [Figure 1](#) (on page 12) from the sample application that displays some of these new styles. To start, you’ll want to define these constants:

```
◇ Number: LVS_EX_GRIDLINES = 0x00000001
◇ Number: LVS_EX_SUBITEMIMAGES = 0x00000002
◇ Number: LVS_EX_CHECKBOXES = 0x00000004
◇ Number: LVS_EX_TRACKSELECT = 0x00000008
◇ Number: LVS_EX_HEADERDRAGDROP = 0x00000010
◇ Number: LVS_EX_FULLROWSELECT = 0x00000020
◇ Number: LVS_EX_ONECLICKACTIVATE = 0x00000040
```

- ◇ Number: LVS_EX_TWOCCLICKACTIVATE = 0x00000080
- ◇ Number: LVM_FIRST = 0x1000
- ◇ Number: LVM_SETEXTENDEDLISTVIEWSTYLE = LVM_FIRST + 54
- ◇ Number: LVM_GETEXTENDEDLISTVIEWSTYLE = LVM_FIRST + 55

The LVS_EX prefix indicates an extended list view style. The LVM prefix indicates a list view message. (These definitions are from the MS Common Controls 1.2 header file.) To enable these styles, you need to send

an LVM_SETEXTENDEDLISTVIEWSTYLE message to a list view control, with the extended style in lParam. For example, to enable full row selection (and to keep any previously set styles as well), you could use the following code:

```
◇ Call SendMessage( hWndLV,
LVM_SETEXTENDEDLISTVIEWSTYLE, 0,
SendMessage( hWndLV,
LVM_GETEXTENDEDLISTVIEWSTYLE, 0, 0 )
| LVS_EX_FULLROWSELECT )
```

As I explained in my previous list view tip, you need to send the extended style message to the actual list view control, not the Visual Toolchest container. You should have something like the following in the SAM_Create message handler of your list view control to obtain the window handle of the actual list view control:

```
◆ cListView: lvDrives
◆ Message Actions
◇ Set hWndLV = GetWindow(
hWndItem, GW_CHILD )
```

See the sample application for all the gory details. **CP**

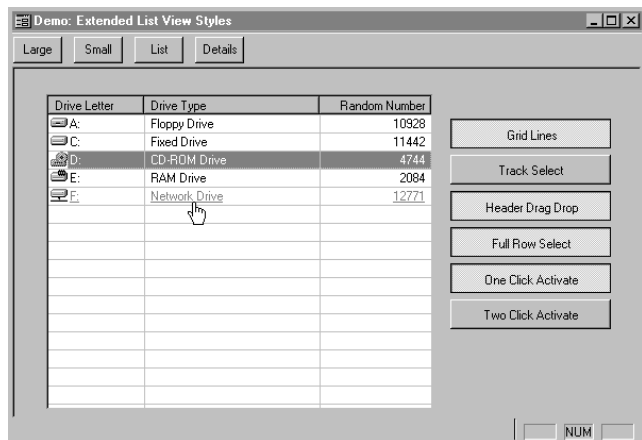


Figure 1. You can see grid lines, full row select, and one-click activate styles enabled.

You can download IVEXFUN.ZIP from this issue's table of contents at www.ProPublishing.com or find it on this month's Companion Disk.